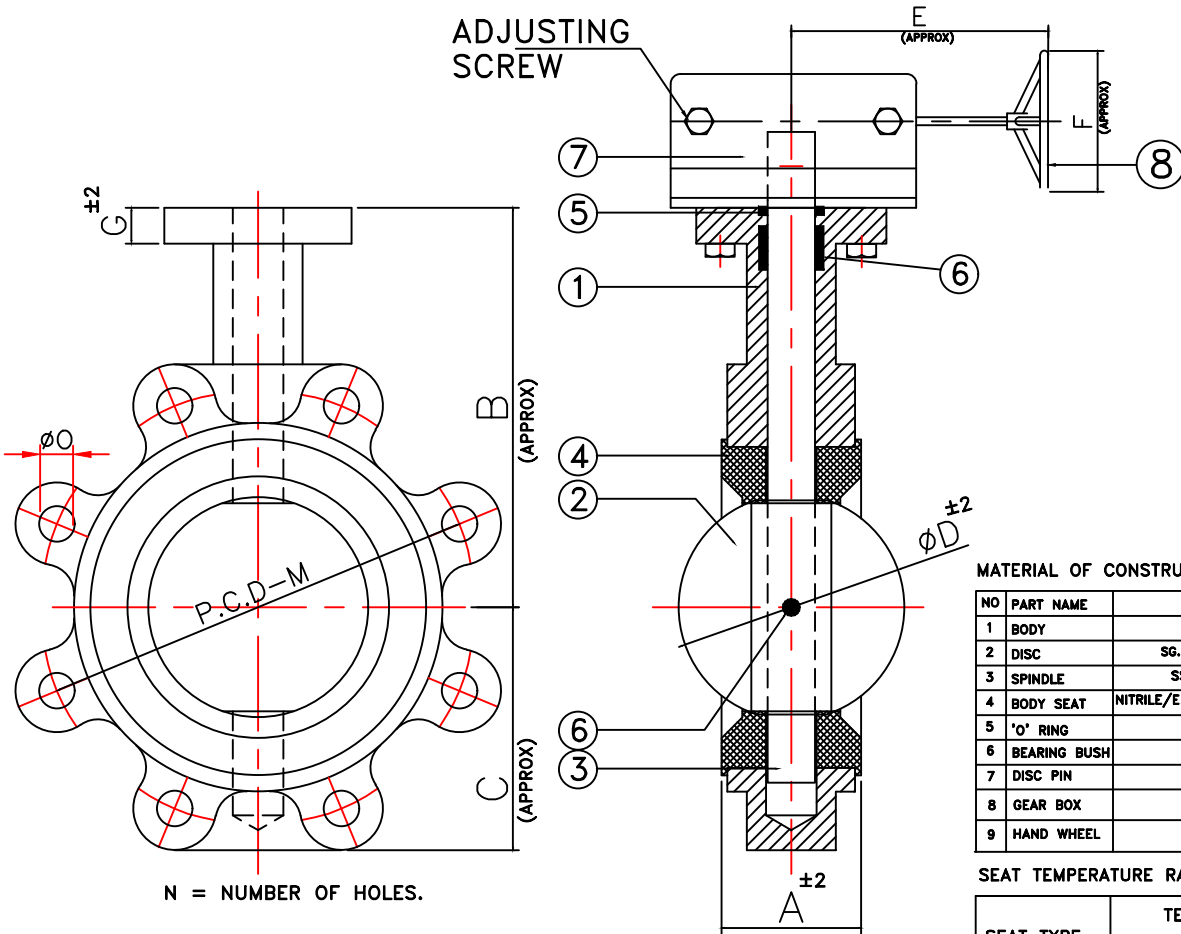




SHREENATH ENGINEERING

PLOT NO-B/22, ZAVERI ESTATE,
NR. KATHWADA G.I.D.C., KATHWADA-SINGARVA ROAD,
KATHWADA, AHMEDABAD-382 430 , GUJARAT, INDIA.
Mobile:- +91 9825530462, 9979082211
E-mail: neconvalves@yahoo.com / Website : www.neconvalves.com

| | | |
|---------------------------------|------------|--|
| DRN | DATE | |
| ABDUL | 10/06/2024 | |
| LUG TYPE BUTTER FLY VALVE. | | |
| DRG. NO : SE/LUG-BFV/GO/100-250 | | |



N = NUMBER OF HOLES.

NOTE : ALL DIMENSION ARE IN MM.

| SIZE | | A | B | C | D | E | F | G | M | N | O | TOP FLANGE MOUNTING (I.S.O 5211) |
|------|------|----|-----|-----|-----|-----|-----|----|-----|---|----|----------------------------------|
| MM | INCH | | | | | | | | PCD | | | |
| 100 | 4" | 52 | 137 | 106 | 100 | 165 | 170 | 11 | 191 | 8 | 19 | F05 |
| 125 | 5" | 56 | 157 | 123 | 125 | 170 | 200 | 11 | 216 | 8 | 22 | F05 |
| 150 | 6" | 56 | 176 | 133 | 150 | 170 | 200 | 15 | 241 | 8 | 22 | F07 |
| 200 | 8" | 60 | 216 | 163 | 199 | 180 | 250 | 12 | 298 | 8 | 22 | F07 |
| 250 | 10" | 68 | 247 | 204 | 249 | 240 | 350 | 15 | 362 | 8 | 25 | F10 |

MATERIAL OF CONSTRUCTION

| NO | PART NAME | MATERIAL |
|----|--------------|--|
| 1 | BODY | WCB/CF8/CF8M/CF3/CF3M |
| 2 | DISC | SG.IRON/WCB/CF8/CF8M/CF3/CF3M |
| 3 | SPINDLE | SS 410/304/316/304L/316L |
| 4 | BODY SEAT | NITRILE/E.P.D.M./SILICON/VITON/HYPALON |
| 5 | 'O' RING | NITRILE / E.P.D.M. |
| 6 | BEARING BUSH | PTFE |
| 7 | DISC PIN | S.S.304/316 |
| 8 | GEAR BOX | CAST IRON |
| 9 | HAND WHEEL | M.S. FABRICATED |

SEAT TEMPERATURE RANGE

| SEAT TYPE | TEMPERATURE RANGE | |
|-----------|-------------------|--------------|
| | Min. | Max. |
| NITRILE | -13°F(-25°C) | 212°F(100°C) |
| EPDM | -13°F(-25°C) | 250°F(120°C) |
| SILICON | -58°F(-50°C) | 356°F(180°C) |
| VITON | -23°F(-5°C) | 392°F(200°C) |
| HYPALON | -4°F(-20°C) | 250°F(120°C) |

TESTING

| PRESSURE RATING | HYDROSTATIC SHELL TEST | | HYDROSTATIC SEAT TEST | |
|-----------------|------------------------|-----|-----------------------|-----|
| | Kg/CM2 | PSI | Kg/CM2 | PSI |
| PN16 | 22 | 310 | 16 | 225 |
| PN10 | 15 | 210 | 10 | 140 |

CONFORMITY TO CODES & STANDARDS

- 1) GENERAL DESIGN & MANUFACTURE :- API 609
- 2) VALVE FACE TO FACE DIMENSION :- API 609 CAT-A
- 3) TOP FLANGE DRILLING :- ISO 5211
- 4) VALVE INSPECTION & TESTING :- API 598
- 5) FLANGE STANDARD CONFORMITY :- ANSI 150# /1.6

THIS DRAWING IS PROPERTY OF SHREENATH ENGINEERING.
SHREENATH ENGINEERING RESERVES RIGHTS OF USE,CHANGE & MODIFY PRODUCT DESIGN OR PRODUCT WITHOUT PRIOR NOTICE.

CHECKED :-

APPROVED :-